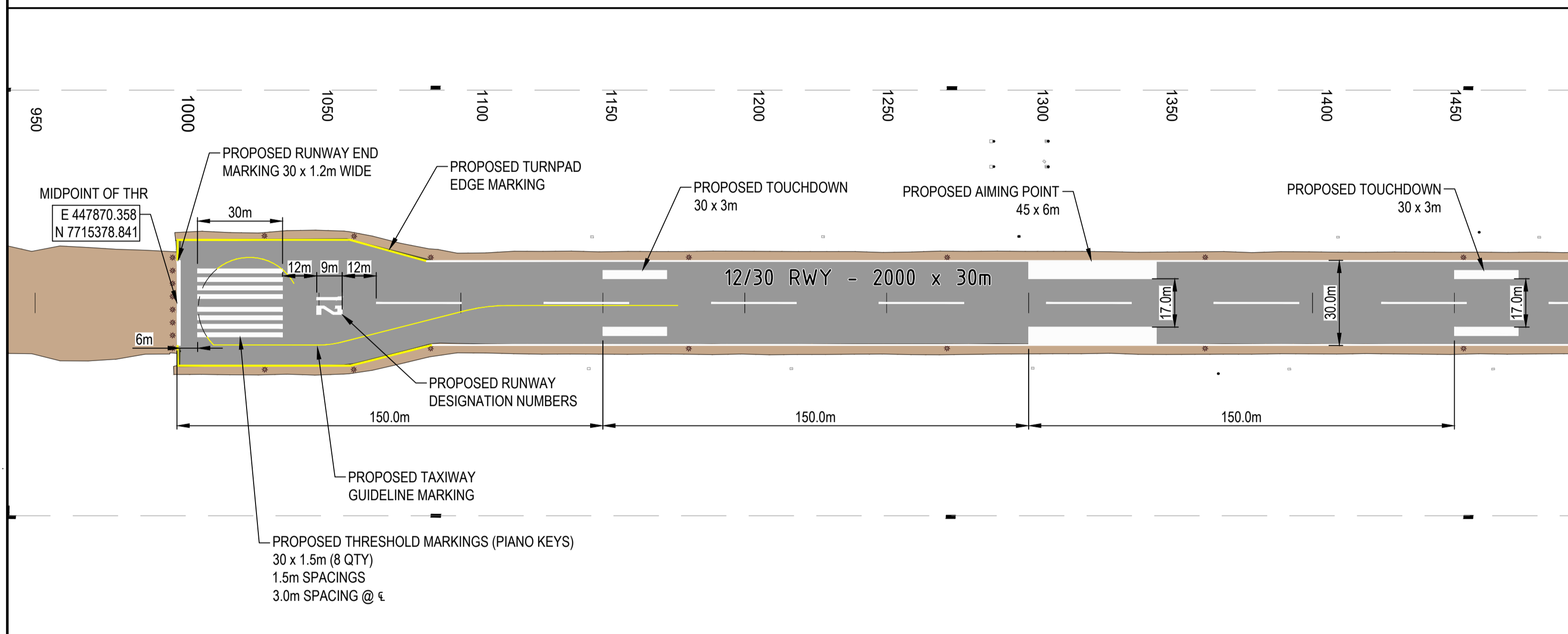


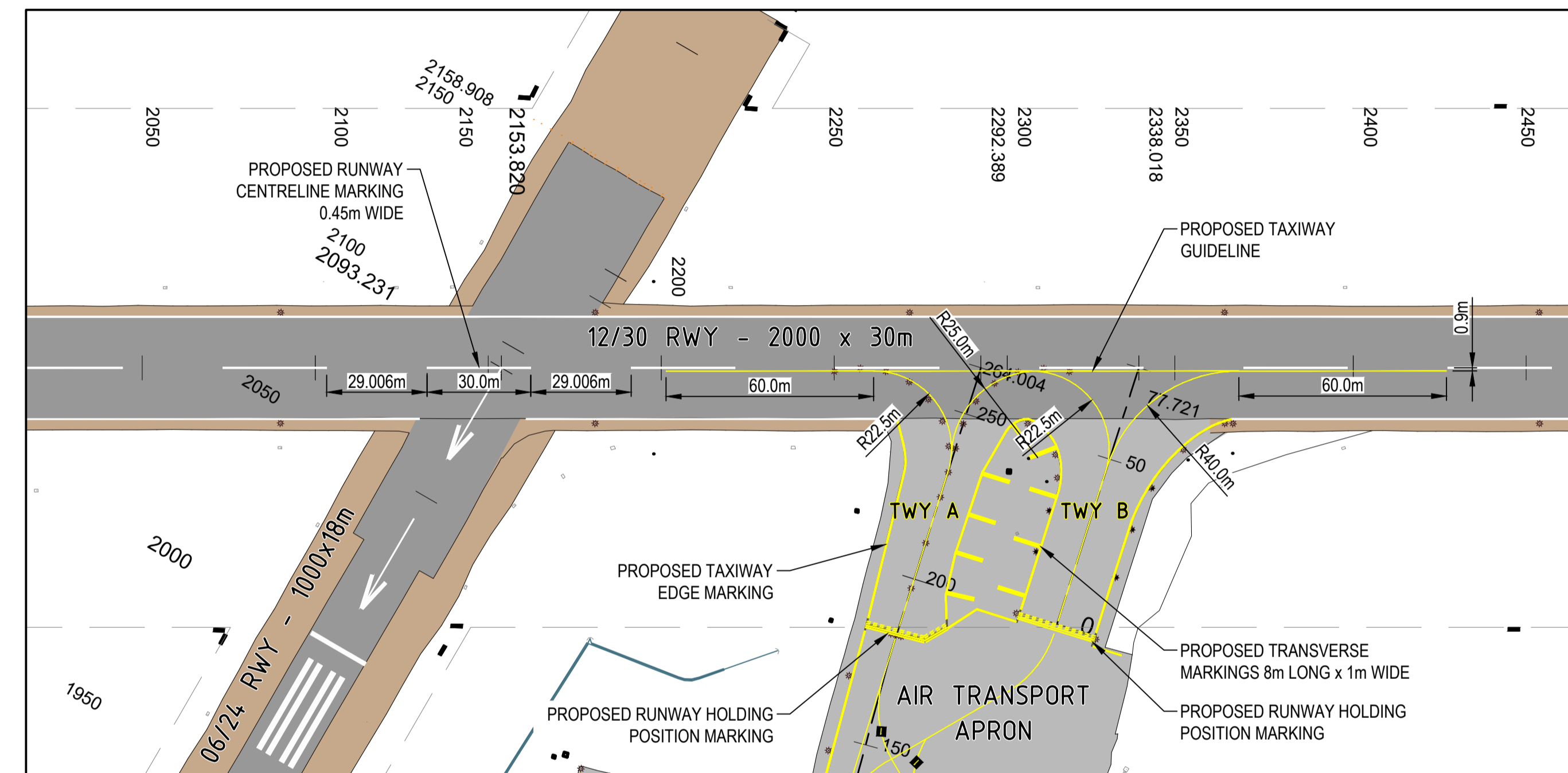
RUNWAY 12/30 - GENERAL LAYOUT

SCALE 1:3000



THRESHOLD 12 DETAIL

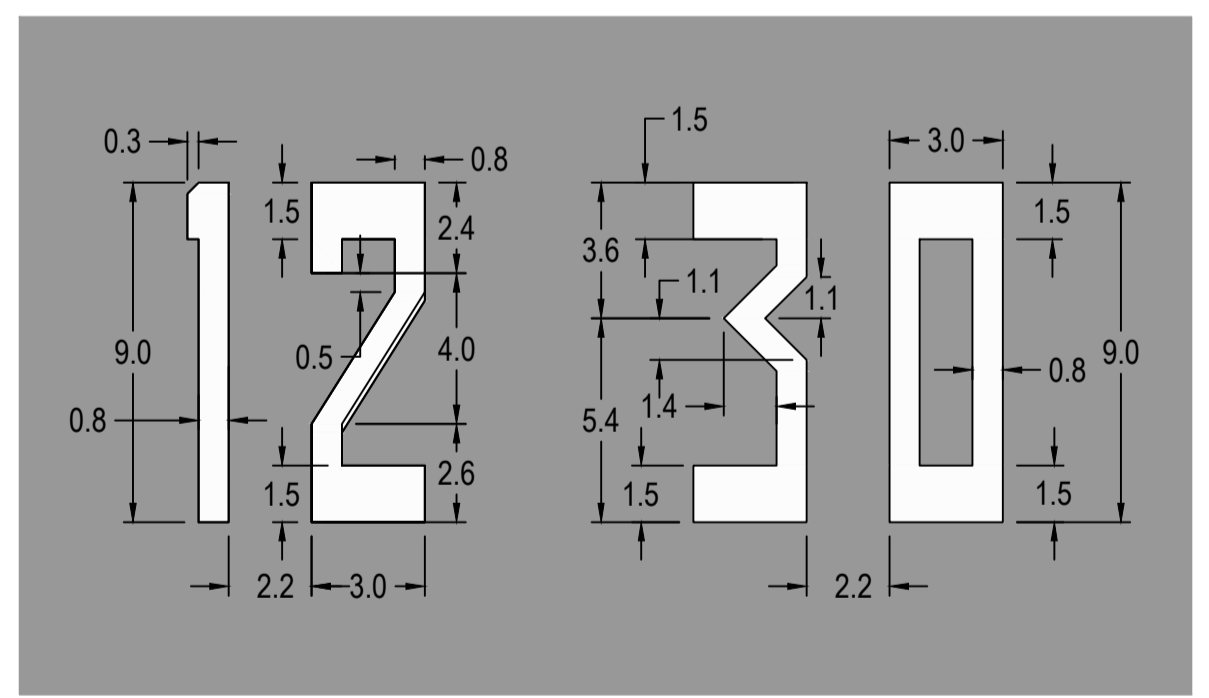
SCALE 1:1125



RUNWAY 12-30 / 06 24 & TAXIWAY A & B INTERSECTION

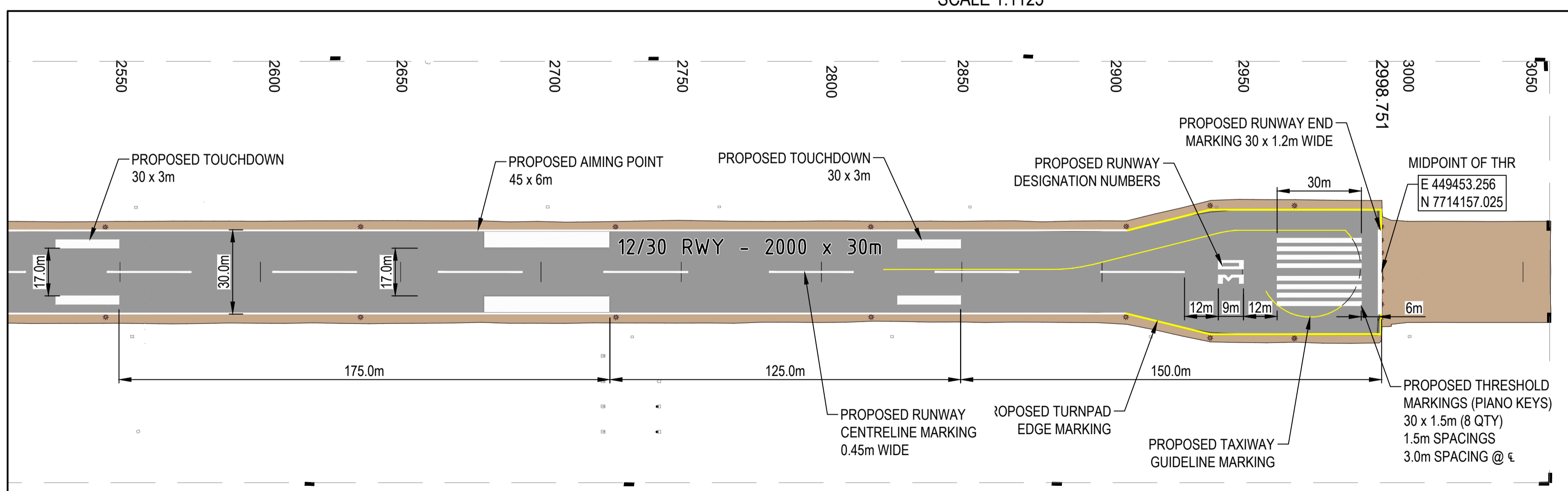
SCALE 1:1125

- NOTES:**
1. PLAN DRAWN TO GDA20/MGA ZONE 54.
 2. LINE MARKING DESIGN IN ACCORDANCE WITH PART 139 (AERODROMES) MANUAL OF STANDARDS 2019.
 3. ALL SETOUT LOCATIONS ARE TO BE CONFIRMED ON-SITE USING COORDINATES AND DIMENSIONS PROVIDED PRIOR TO PAINTING.
 4. SURVEY SETOUT IS TO BE CARRIED OUT FROM THE SUPPLIED CAD MODEL.
 5. ALL NEW PAINT MARKINGS ARE TO BE COMPLIANT WITH THE REQUIREMENTS OF MOS PART 139 (2019).



RUNWAY DESIGNATION NUMBERS
SCALE 1:200
COLOURED WHITE
NUMBERS SPACED CENTRALLY ABOUT RWY €

- LEGEND**
- EXISTING RUNWAY PAVEMENT
 - EXISTING TAXIWAY / APRON PAVEMENT
 - EXISTING SEALED SHOULDER



THRESHOLD 30 DETAIL

SCALE 1:1125

PRELIMINARY
FOR DISCUSSION ONLY

REV	DATE	AMENDMENTS
A	25.09.24	FOR INFORMATION

XREF LIST
Includes: ZSH_A1
Includes: X YCCY SURV GDA20-54
Includes: X YCCY CTRL
Includes: X YCCY LMK DES01 GDA20-54
Includes: X YCCY HAT

This document carries Airworks Consulting Pty Ltd copyright and is reproduced here for information only. The information shown must be verified for accuracy and completeness by necessary investigation and site inspection and measurement. Users of this information hereby agree and indemnify the company against any claim from the use of the information contained herein and associated discussions.

Airworks
simon@airworksconsulting.com.au

CLIENT

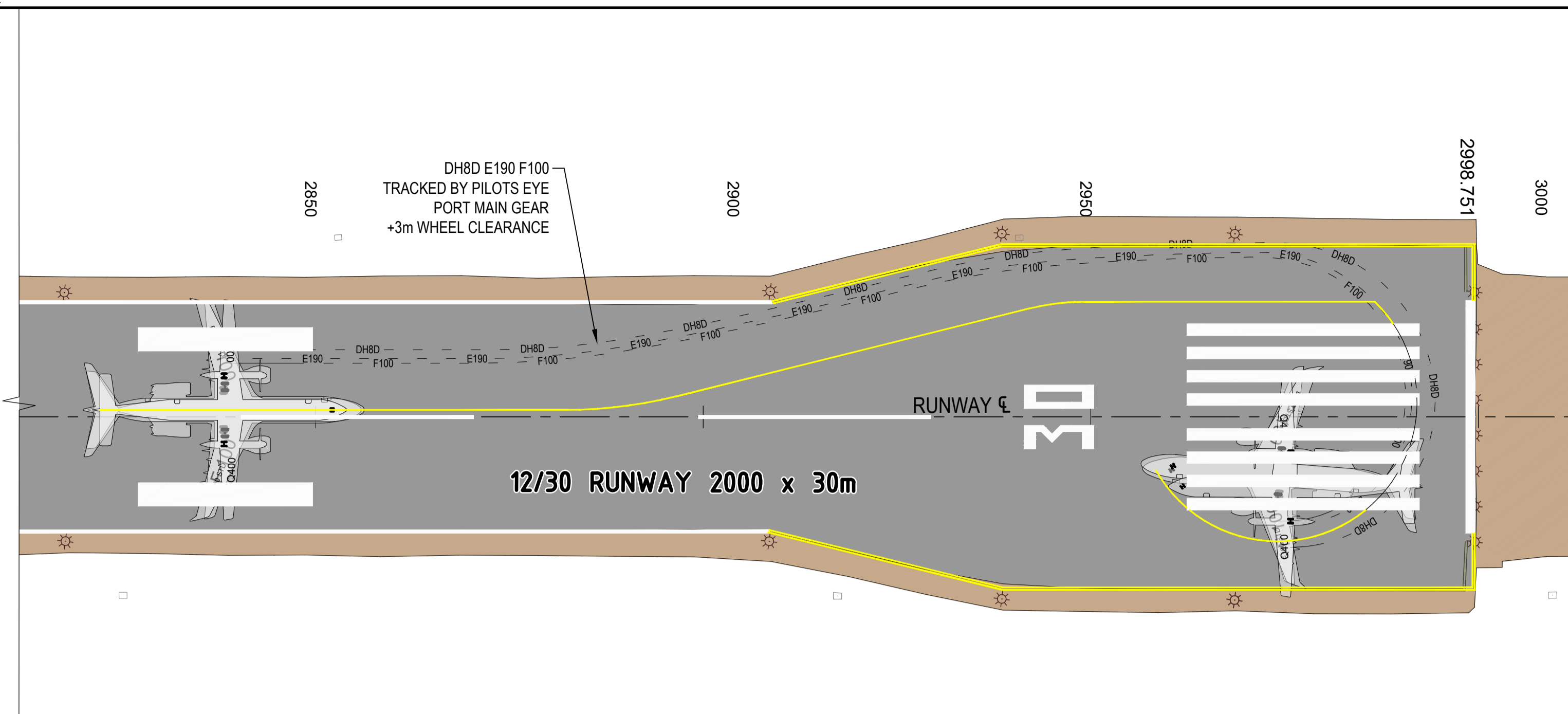
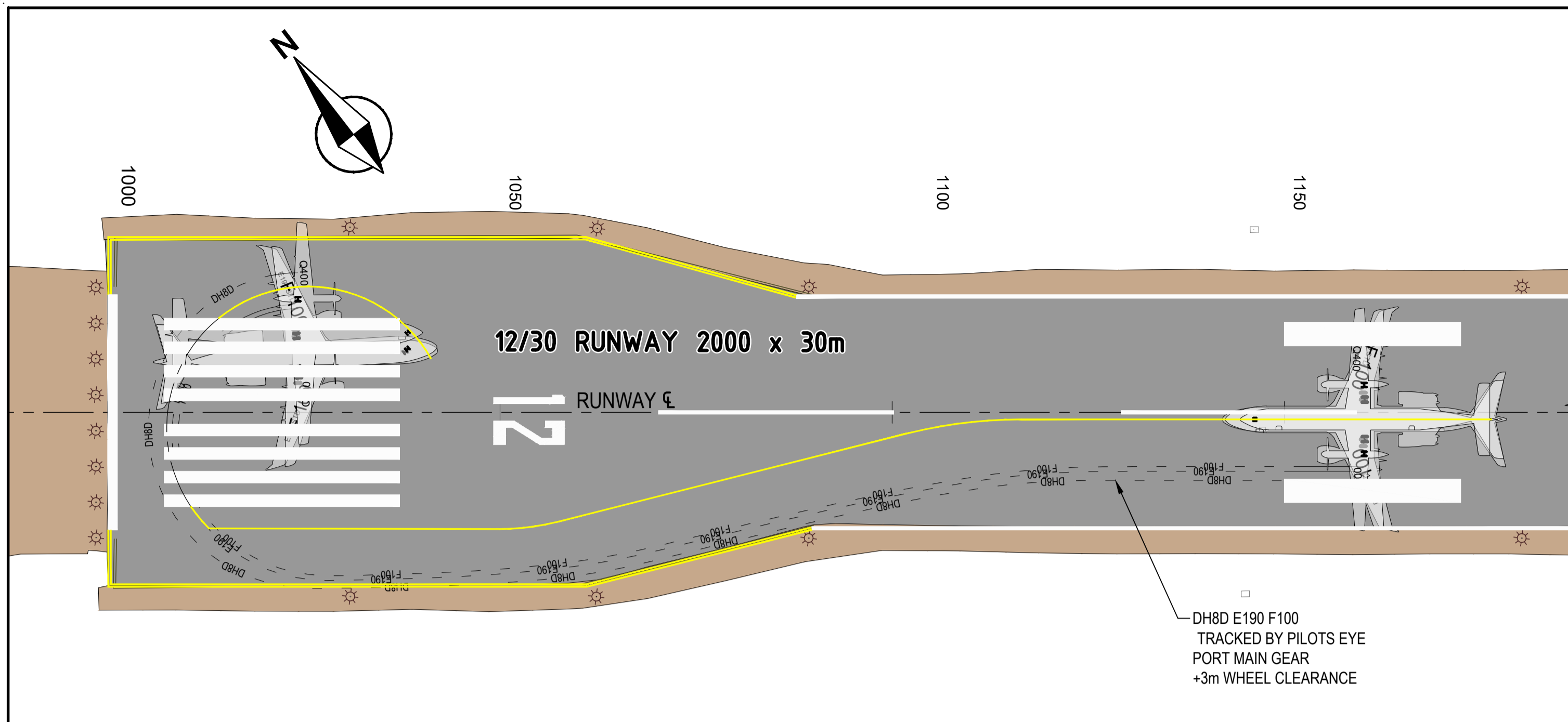
CLONCURRY SHIRE COUNCIL

DRAWN : AIRWORKS 25.09.24
DESIGNED : AIRWORKS 25.09.24
APPROVED : G.WHITE
COMPANY : APES

CLONCURRY, QLD
CLONCURRY AIRPORT RESEAL PROJECT
12/30 RUNWAY - LINE MARKING
GENERAL ARRANGEMENT & DETAILS

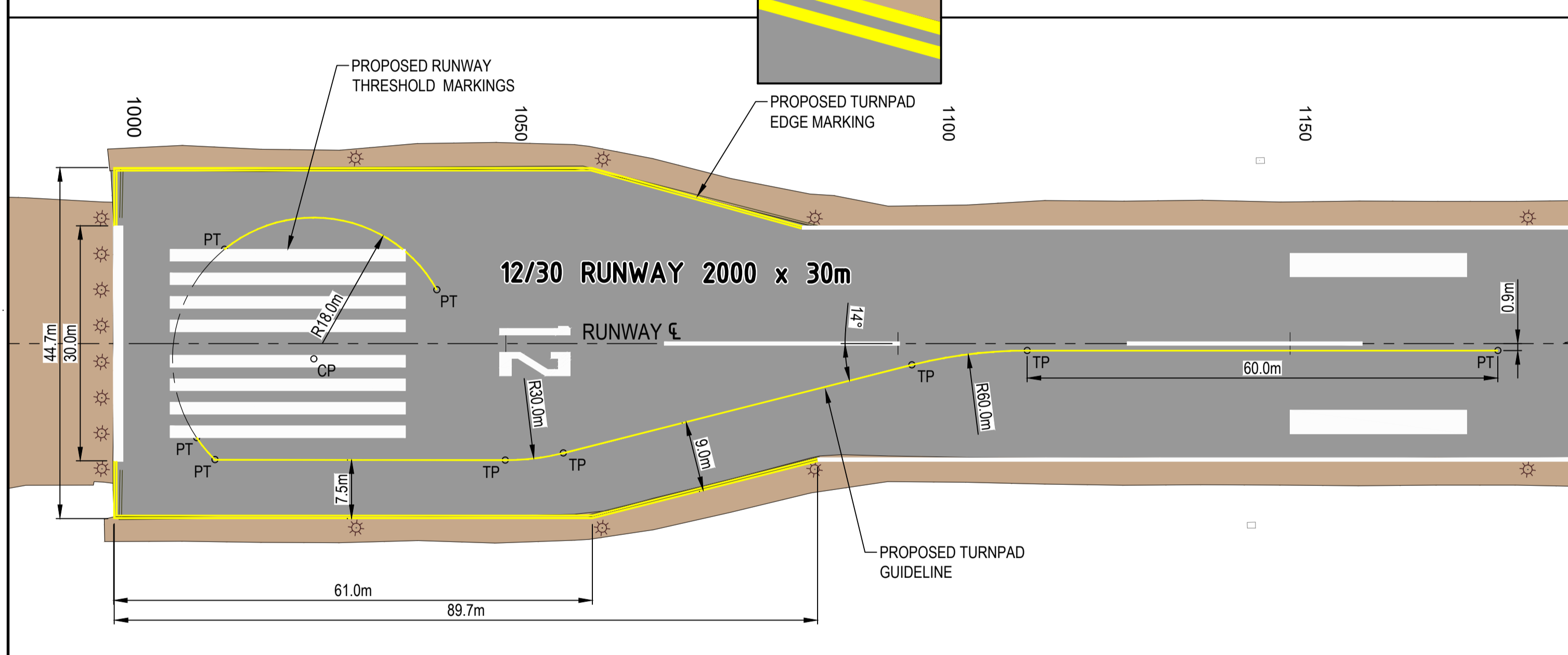
SCALE 1:25 0 1.25 2.5 3.75 5m
A1 SCALE 1:1250

DRAWING No. **YCCY24AV01** REV **A**



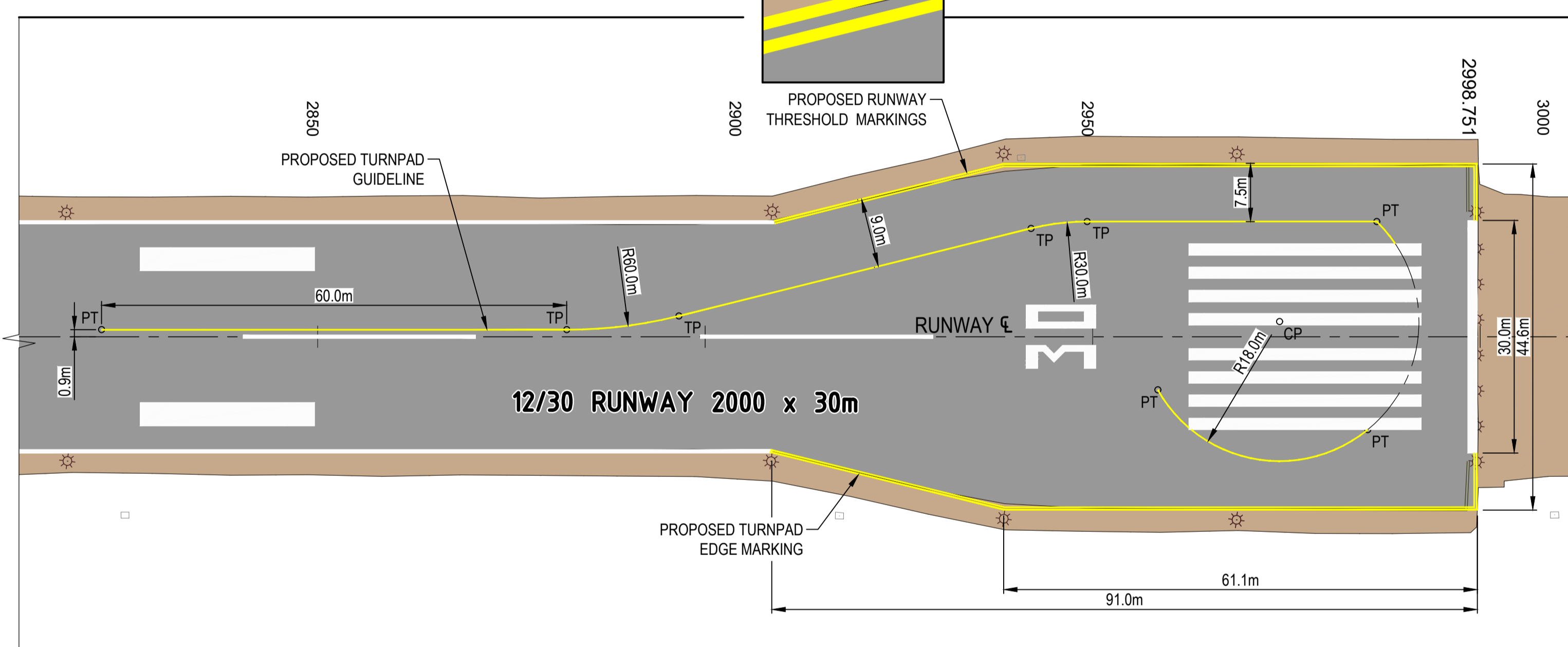
THRESHOLD 12 TURN PAD TRACKING

SCALE 1:500



THRESHOLD 30 TURN PAD TRACKING

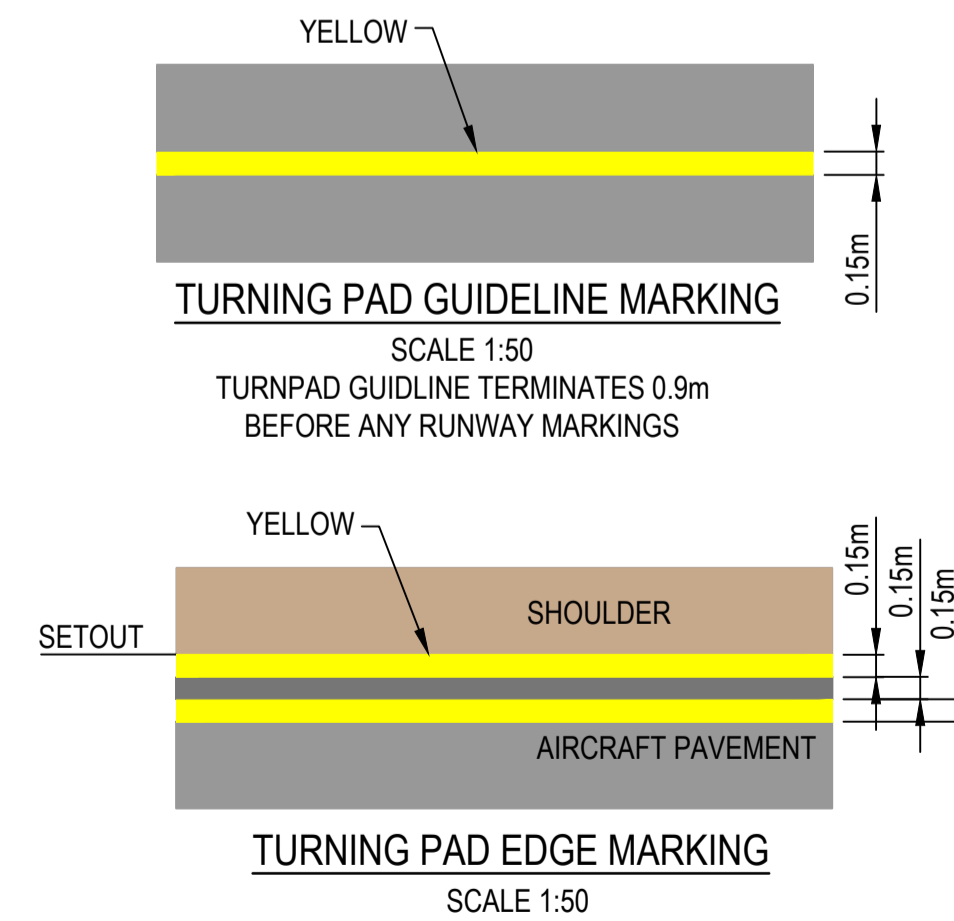
SCALE 1:500



THRESHOLD 12 TURN PAD LINE MARKING

SCALE 1:500

1. TURN PAD LINE NOT MARKED BETWEEN RUNWAY THRESHOLD MARKINGS



NOTES

- ALL DIMENSIONS IN METRES UNLESS NOTED OTHERWISE.
 - DESIGN IN ACCORDANCE WITH PART 139 (AERODROMES) MANUAL OF STANDARDS 2019. ALL LINE MARKING & DESIGNATIONS IN ACCORDANCE WITH PART 139 MOS 2019 CHAPTER 8 DIVISION 5.
 - GRID CO-ORDINATES TO MGA/GDA20 ZONE 54 & GEOGRAPHIC CO-ORDINATES TO WGS-84.
 - AIRCRAFT TRACKED BY PILOTS EYE OR COCKPIT ASSUMES THAT COCKPIT CENTRE IS TRACKING DIRECTLY OVER THE LEAD OUT / GUIDELINE AS DETERMINED BY PILOT IN COMMAND. NORMAL COCKPIT RADIUS TURN IS 80% WHEEL ANGLE DEFLECTION.
 - CLIENT TO CONFIRM THAT NO CRITICAL OBJECTS EXISTS WITHIN THE WINGTIP CLEARANCE ZONE AND THAT PAVEMENT STRENGTH IS SUITABLE FOR INTENDED AIRCRAFT OPERATIONS.
 - MINIMUM AIRCRAFT WHEEL TO PAVEMENT EDGE CLEARANCES:
 - DH8D*, E190 & F100 WHEEL TO EDGE = 3m
- *DH8D OPERATES UNDER REGULATORY INSTRUMENT FOR REDUCED MAIN WHEEL CLEARANCES

THRESHOLD 30 TURN PAD LINE MARKING

SCALE 1:500

1. TURN PAD LINE NOT MARKED BETWEEN RUNWAY THRESHOLD MARKINGS

AIRCRAFT	ICAO	SPAN	LENGTH	HEIGHT	COCKPIT 80% TURN RAD	W/BASE	OMGWS
DASH 8-400	DH8D	28.42	32.83	8.38	16.35	13.94	9.55
EMBRAER 190	E190	28.72	36.24	10.57	17.27	13.82	7.22
FOKKER 100	F100	28.08	35.53	8.63	16.45	14.01	6.05

LEGEND

EXISTING RUNWAY PAVEMENT	EXISTING TAXIWAY / APRON PAVEMENT
EXISTING SEALED SHOULDER	PT
	TP
	CP
	INTERSECTION OR TANGENT POINT
	CENTRE POINT

PRELIMINARY
FOR DISCUSSION ONLY

REV	DATE	AMENDMENTS
A	25.09.24	FOR INFORMATION

XREF LIST
Includes: ZSH_A1
Includes: X YCCY SURV GDA20-54
Includes: X YCCY CTRL
Includes: X YCCY LMK DES01 GDA20-54
Includes: X YCCY HAT
Includes: X YCCY TRK DES01 GDA20-54

This document carries Airworks Consulting Pty Ltd copyright and is reproduced here for information only. The information shown must be verified for accuracy and completeness by necessary investigation and site inspection and measurement. Users of this information hereby agree and indemnify the company against any claim from the use of the information contained herein and associated discussions.

Airworks
simon@airworksconsulting.com.au

CLIENT

CLONCURRY SHIRE COUNCIL

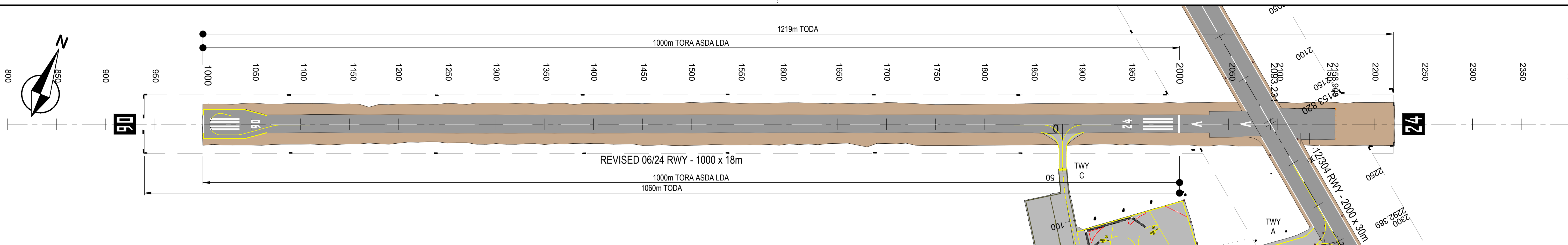
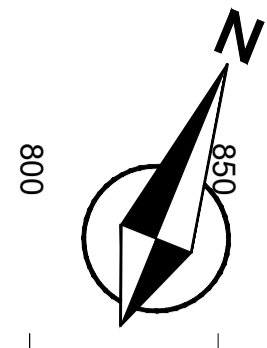
DRAWN : AIRWORKS 25.09.24
DESIGNED : AIRWORKS 25.09.24
APPROVED : G.WHITE
COMPANY : APES

CLONCURRY, QLD

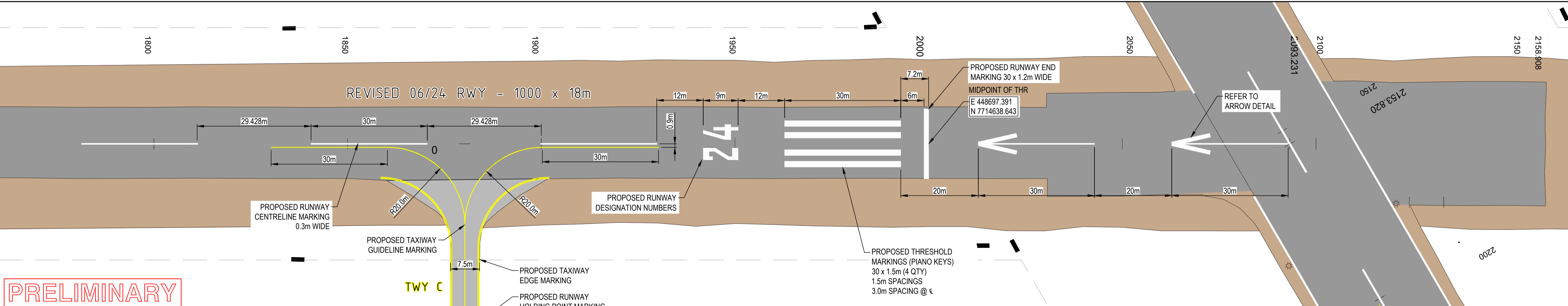
CLONCURRY AIRPORT RESEAL PROJECT
12/30 RUNWAY - THRESHOLD TURN PADS
GENERAL ARRANGEMENT & DETAILS

SCALE 5 0 5 10 15 20m
A1 SCALE 1:500

DRAWING No. **YCCY24AV02** REV **A**



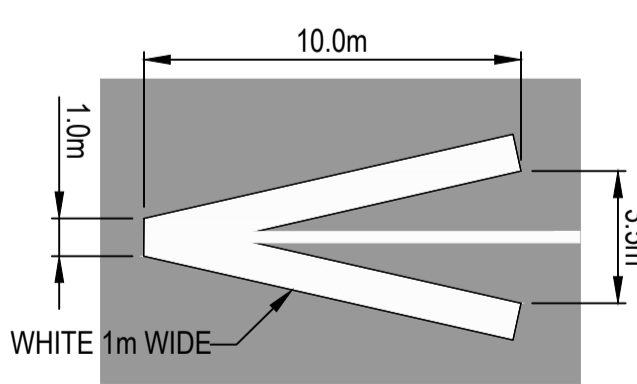
RUNWAY 06/24 - GENERAL LAYOUT
SCALE 1:2000



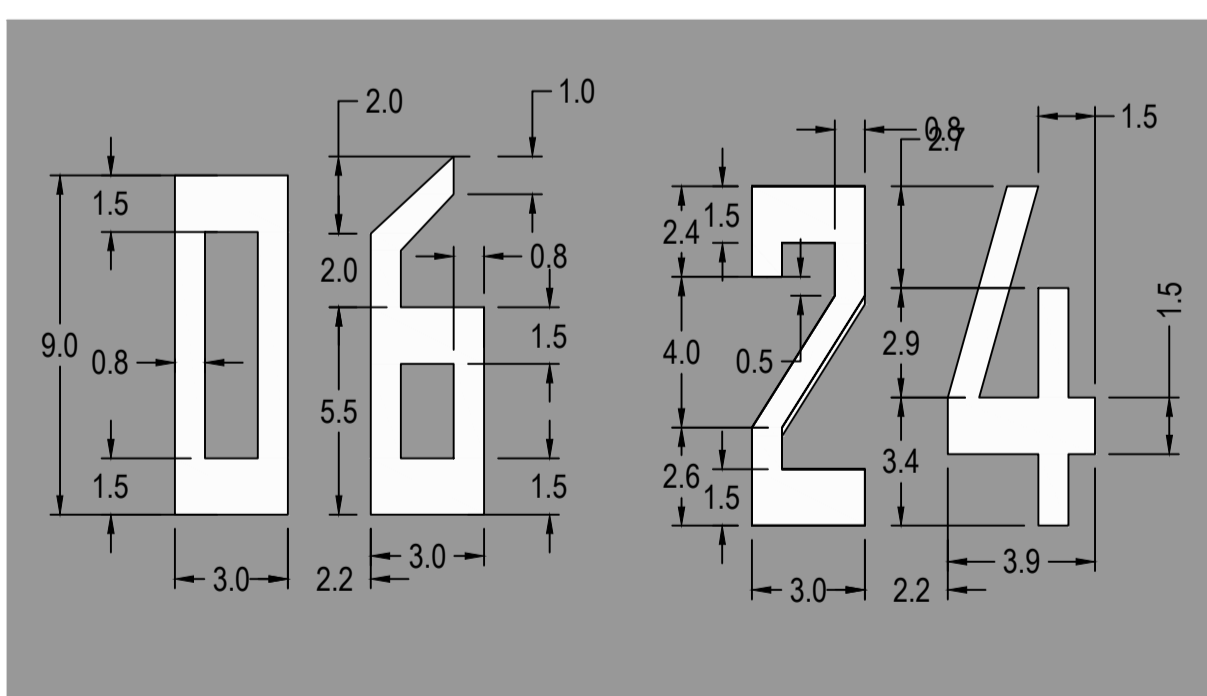
PRELIMINARY
FOR DISCUSSION ONLY

- NOTES:**
1. PLAN DRAWN TO GDA2011MGA ZONE 54.
 2. LINE MARKING DESIGN IN ACCORDANCE WITH PART 139 (AERODROMES) MANUAL OF STANDARDS 2019.
 3. ALL SETOUT LOCATIONS ARE TO BE CONFIRMED ON-SITE USING COORDINATES AND DIMENSIONS PROVIDED PRIOR TO PAINTING.
 4. SURVEY SETOUT IS TO BE CARRIED OUT FROM THE SUPPLIED CAD MODEL.
 5. ALL NEW PAINT MARKINGS ARE TO BE COMPLIANT WITH THE REQUIREMENTS OF MOS PART 139 (2019).

- LEGEND**
- EXISTING RUNWAY PAVEMENT
 - EXISTING TAXIWAY / APRON PAVEMENT
 - EXISTING SEALED SHOULDER

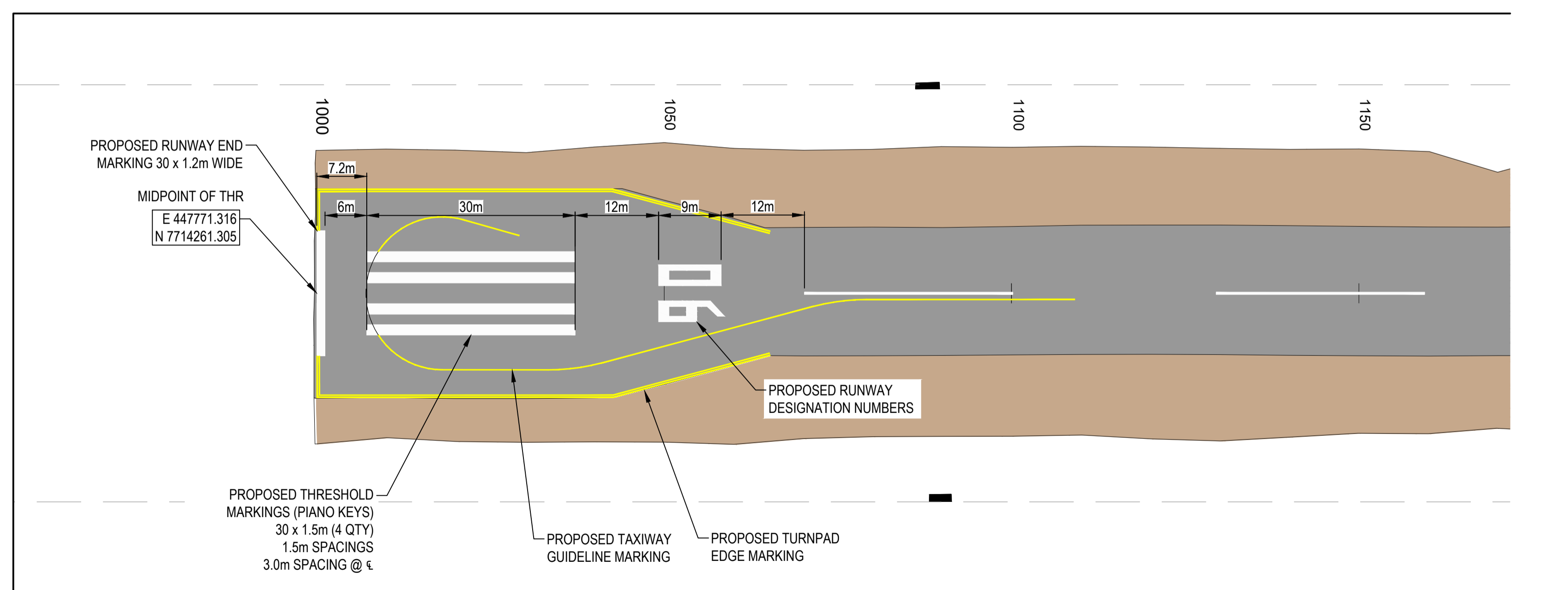


PERMANENTLY DISPLACED ARROW HEAD DETAIL
SCALE 1:200
COLOURED WHITE



RUNWAY DESIGNATION NUMBERS
SCALE 1:200
COLOURED WHITE
NUMBERS SPACED CENTRALLY ABOUT RWY €

THRESHOLD 24 DETAIL
SCALE 1:500



THRESHOLD 06 DETAIL
SCALE 1:500

REV	DATE	AMENDMENTS
A	25.09.24	FOR INFORMATION

XREF LIST
Includes: ZSH_A1
Includes: X YCCY SURV GDA20-54
Includes: X YCCY CTRL
Includes: X YCCY LMK DES01 GDA20-54
Includes: X YCCY HAT

This document carries Airworks Consulting Pty Ltd copyright and is reproduced here for information only. The information shown must be verified for accuracy and completeness by necessary investigation and site inspection and measurement. Users of this information hereby agree and indemnify the company against any claim from the use of the information contained herein and associated discussions.

Airworks
simon@airworksconsulting.com.au

CLIENT

CLONCURRY SHIRE COUNCIL

DRAWN: AIRWORKS 25.09.24
DESIGNED: AIRWORKS 25.09.24
APPROVED: G.WHITE
COMPANY: APES

CLONCURRY, QLD

CLONCURRY AIRPORT RESEAL PROJECT

06/24 RUNWAY - LINE MARKING

GENERAL ARRANGEMENT & DETAILS

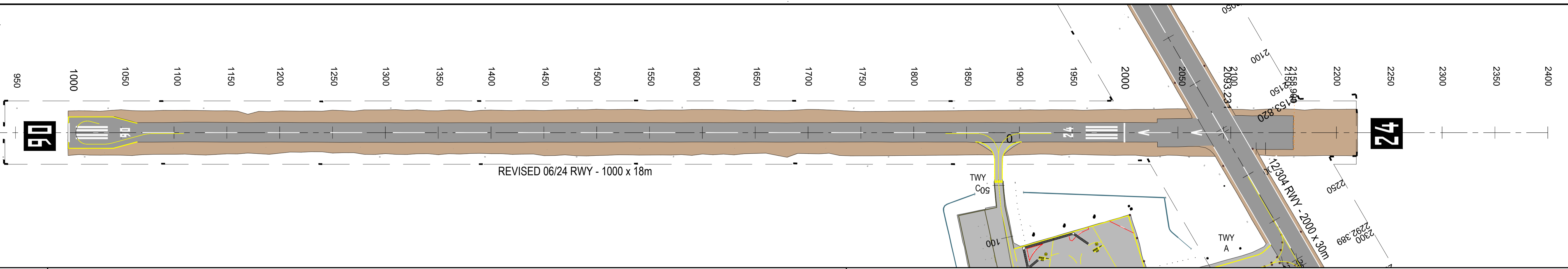
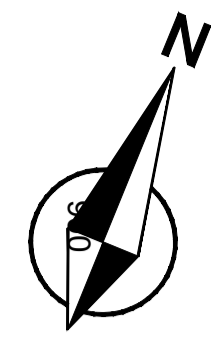
SCALE 1:2500

0 1.25 2.5 3.75 5m

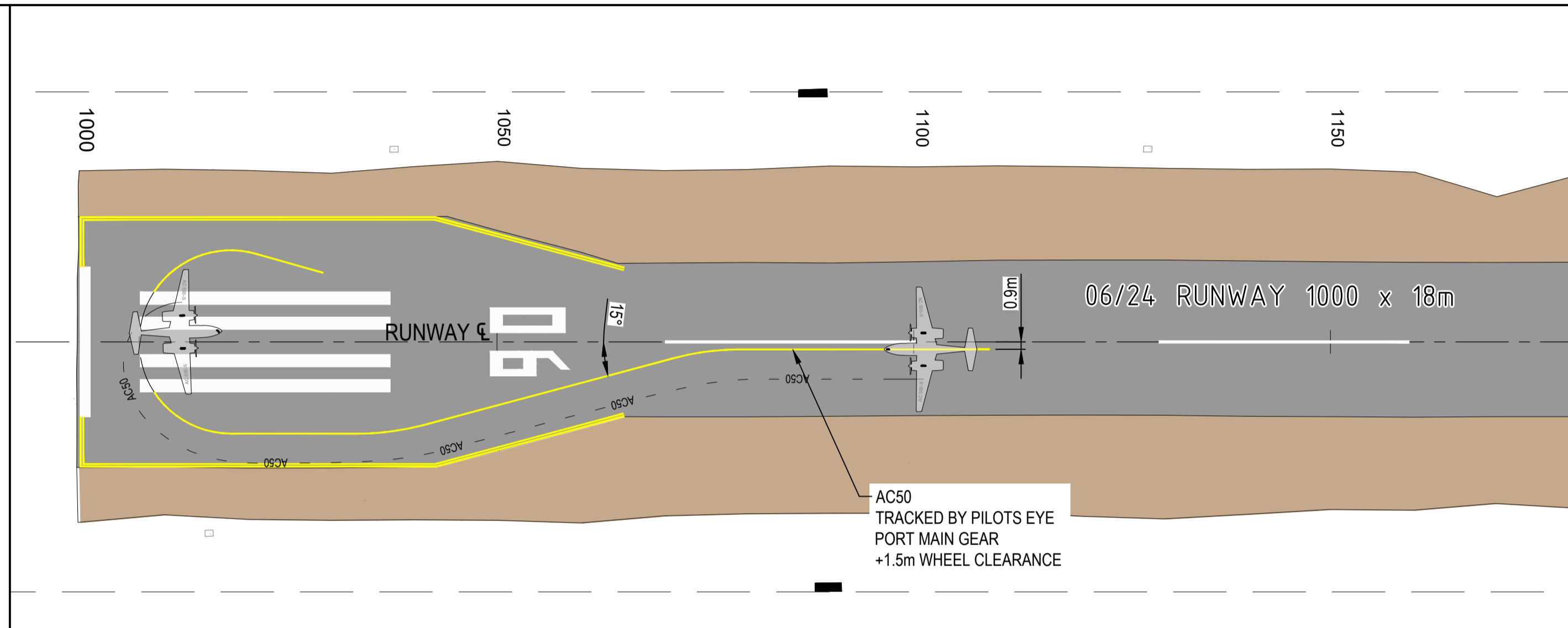
A1 SCALE 1:1250

DRAWING No. **YCCY24AV03**

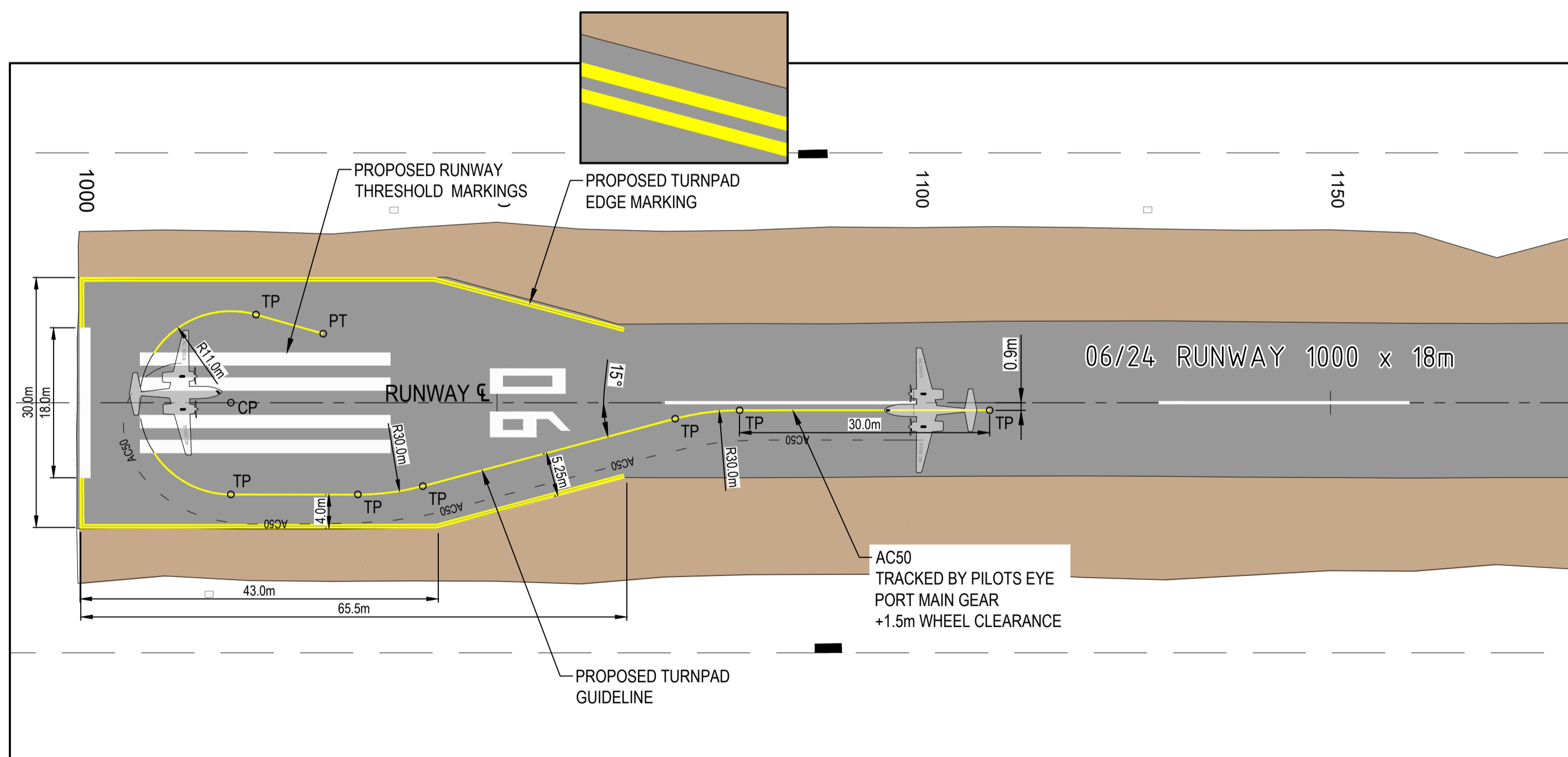
REV **A**



RUNWAY 06/24 - GENERAL LAYOUT
SCALE 1:2000



THRESHOLD 06 TURN PAD TRACKING
SCALE 1:500



THRESHOLD 06 TURN PAD LINE MARKING
SCALE 1:500

1. TURN PAD LINE NOT MARKED BETWEEN RUNWAY THRESHOLD MARKINGS

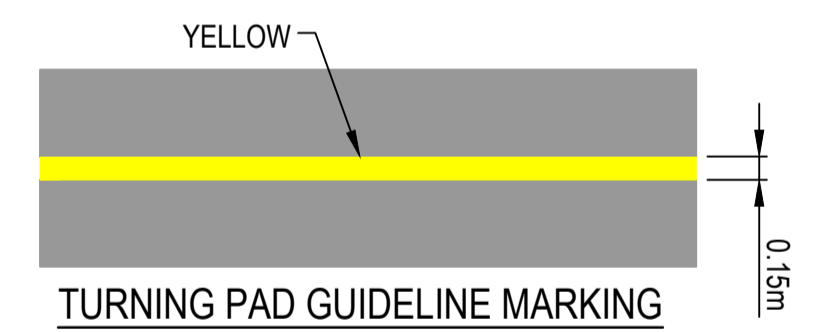
NOTES

1. ALL DIMENSIONS IN METRES UNLESS NOTED OTHERWISE.
2. DESIGN IN ACCORDANCE WITH PART 139 (AERODROMES) MANUAL OF STANDARDS 2019. ALL LINE MARKING & DESIGNATIONS IN ACCORDANCE WITH PART 139 MOS 2019 CHAPTER 8 DIVISION 5.
3. GRID CO-ORDINATES TO MGA/GDA20 ZONE 54 & GEOGRAPHIC CO-ORDINATES TO WGS-84.
4. AIRCRAFT TRACKED BY PILOTS EYE OR COCKPIT ASSUMES THAT COCKPIT CENTRE IS TRACKING DIRECTLY OVER THE LEAD OUT / GUIDELINE AS DETERMINED BY PILOT IN COMMAND. NORMAL COCKPIT RADIUS TURN IS 80% WHEEL ANGLE DEFLECTION.
5. CLIENT TO CONFIRM THAT NO CRITICAL OBJECTS EXISTS WITHIN THE WINGTIP CLEARANCE ZONE AND THAT PAVEMENT STRENGTH IS SUITABLE FOR INTENDED AIRCRAFT OPERATIONS.
6. MINIMUM AIRCRAFT WHEEL TO PAVEMENT EDGE CLEARANCES:
 - AC50 WHEEL TO EDGE = 1.5m

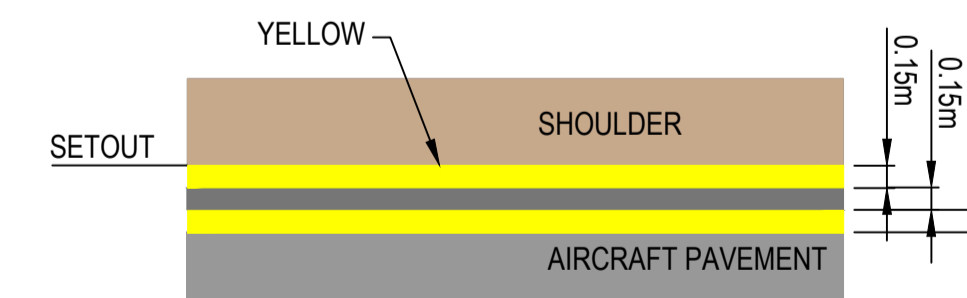
AIRCRAFT	ICAO	SPAN	LENGTH	HEIGHT	COCKPIT 80% TURN RAD	W/BASE	OMGWS
AEROCOMMANDER	AC50	14.95	11.15	4.42	3.67	4.26	4.14

LEGEND

- EXISTING RUNWAY PAVEMENT
- EXISTING TAXIWAY / APRON PAVEMENT
- EXISTING SEALED SHOULDER
- TURNING PAD GUIDELINE MARKING
- TURNING PAD EDGE MARKING
- PT, TP
- CP
- INTERSECTION OR TANGENT POINT
- CENTRE POINT



TURNING PAD GUIDELINE MARKING
SCALE 1:50
TURNPAD GUIDELINE TERMINATES 0.9m BEFORE ANY RUNWAY MARKINGS



TURNING PAD EDGE MARKING
SCALE 1:50

PRELIMINARY
FOR DISCUSSION ONLY

REV	DATE	AMENDMENTS
A	25.09.24	FOR INFORMATION

XREF LIST
Includes: ZSH_A1
Includes: X YCCY SURV GDA20-54
Includes: X YCCY CTRL
Includes: X YCCY HAT
Includes: X YCCY LMK DES01 GDA20-54
Includes: X YCCY TRK DES01 GDA20-54

This document carries Airworks Consulting Pty Ltd copyright and is reproduced here for information only. The information shown must be verified for accuracy and completeness by necessary investigation and site inspection and measurement. Users of this information hereby agree and indemnify the company against any claim from the use of the information contained herein and associated discussions.

Airworks
simon@airworksconsulting.com.au

CLIENT

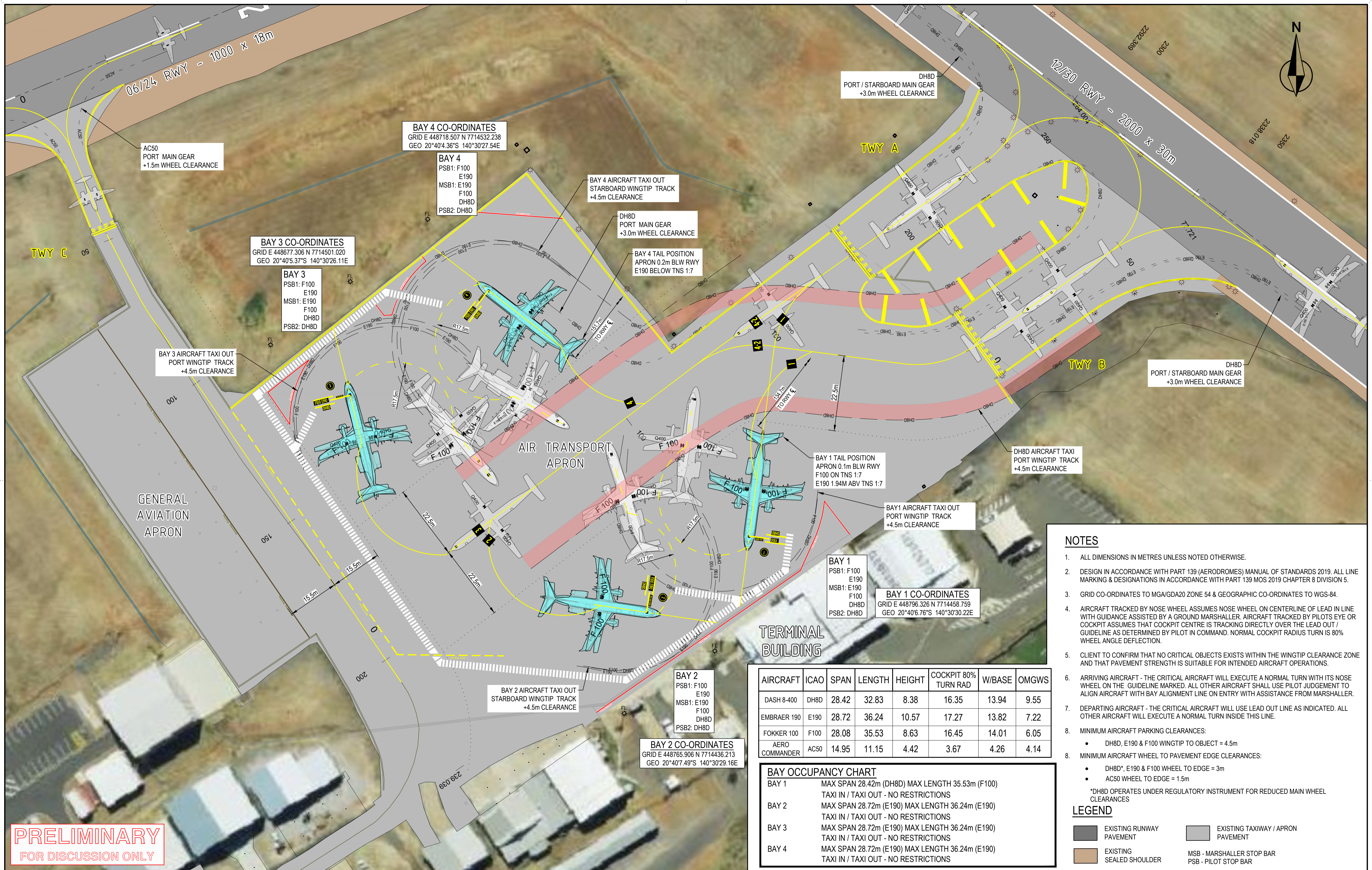
CLONCURRY SHIRE COUNCIL

DRAWN : AIRWORKS 25.09.24
DESIGNED : AIRWORKS 25.09.24
APPROVED : G.WHITE
COMPANY : APES

CLONCURRY, QLD
CLONCURRY AIRPORT RESEAL PROJECT
06/24 RUNWAY - THRESHOLD TURN PAD
TRACKING & LINE MARKING

SCALE 5 0 5 10 15 20m
A1 SCALE 1:500

DRAWING No. **YCCY24AV04** REV **A**



PRELIMINARY
FOR DISCUSSION ONLY

NOTES

- ALL DIMENSIONS IN METRES UNLESS NOTED OTHERWISE.
- DESIGN IN ACCORDANCE WITH PART 139 (AERODROMES) MANUAL OF STANDARDS 2019. ALL LINE MARKING & DESIGNATIONS IN ACCORDANCE WITH PART 139 MOS 2019 CHAPTER 8 DIVISION 5.
- GRID CO-ORDINATES TO MGA/GDA20 ZONE 54 & GEOGRAPHIC CO-ORDINATES TO WGS-84.
- AIRCRAFT TRACKED BY NOSE WHEEL ASSUMES NOSE WHEEL ON CENTERLINE OF LEAD IN LINE WITH GUIDANCE ASSISTED BY A GROUND MARSHALLER. AIRCRAFT TRACKED BY PILOTS EYE OR COCKPIT ASSUMES THAT COCKPIT CENTRE IS TRACKING DIRECTLY OVER THE LEAD OUT / GUIDELINE AS DETERMINED BY PILOT IN COMMAND. NORMAL COCKPIT RADIUS TURN IS 80% WHEEL ANGLE DEFLECTION.
- CLIENT TO CONFIRM THAT NO CRITICAL OBJECTS EXISTS WITHIN THE WINGTIP CLEARANCE ZONE AND THAT PAVEMENT STRENGTH IS SUITABLE FOR INTENDED AIRCRAFT OPERATIONS.
- ARRIVING AIRCRAFT - THE CRITICAL AIRCRAFT WILL EXECUTE A NORMAL TURN WITH ITS NOSE WHEEL ON THE GUIDELINE MARKED. ALL OTHER AIRCRAFT SHALL USE PILOT JUDGEMENT TO ALIGN AIRCRAFT WITH BAY ALIGNMENT LINE ON ENTRY WITH ASSISTANCE FROM MARSHALLER.
- DEPARTING AIRCRAFT - THE CRITICAL AIRCRAFT WILL USE LEAD OUT LINE AS INDICATED. ALL OTHER AIRCRAFT WILL EXECUTE A NORMAL TURN INSIDE THIS LINE.
- MINIMUM AIRCRAFT PARKING CLEARANCES:
 - DH8D, E190 & F100 WINGTIP TO OBJECT = 4.5m
- MINIMUM AIRCRAFT WHEEL TO PAVEMENT EDGE CLEARANCES:
 - DH8D*, E190 & F100 WHEEL TO EDGE = 3m
 - AC50 WHEEL TO EDGE = 1.5m

*DH8D OPERATES UNDER REGULATORY INSTRUMENT FOR REDUCED MAIN WHEEL CLEARANCES

LEGEND

- EXISTING RUNWAY PAVEMENT
- EXISTING TAXIWAY / APRON PAVEMENT
- EXISTING SEALED SHOULDER
- MSB - MARSHALLER STOP BAR
- PSB - PILOT STOP BAR

AIRCRAFT	ICAO	SPAN	LENGTH	HEIGHT	COCKPIT 80% TURN RAD	W/BASE	OMGWS
DASH 8-400	DH8D	28.42	32.83	8.38	16.35	13.94	9.55
EMBRAER 190	E190	28.72	36.24	10.57	17.27	13.82	7.22
FOKKER 100	F100	28.08	35.53	8.63	16.45	14.01	6.05
AERO COMMANDER	AC50	14.95	11.15	4.42	3.67	4.26	4.14

BAY OCCUPANCY CHART

BAY 1	MAX SPAN 28.42m (DH8D) MAX LENGTH 35.53m (F100) TAXI IN / TAXI OUT - NO RESTRICTIONS
BAY 2	MAX SPAN 28.72m (E190) MAX LENGTH 36.24m (E190) TAXI IN / TAXI OUT - NO RESTRICTIONS
BAY 3	MAX SPAN 28.72m (E190) MAX LENGTH 36.24m (E190) TAXI IN / TAXI OUT - NO RESTRICTIONS
BAY 4	MAX SPAN 28.72m (E190) MAX LENGTH 36.24m (E190) TAXI IN / TAXI OUT - NO RESTRICTIONS

REV	DATE	AMENDMENTS
A	25.09.24	FOR INFORMATION

XREF LIST

Includes: ZSH_A1
Includes: X YCCY SURV GDA20-54
Includes: X YCCY CTRL
Includes: X YCCY HAT
Includes: X YCCY LMK DES01 GDA20-54
Includes: X YCCY IMG
Includes: X YCCY TRK DES01 GDA20-54
Includes: CLONCURRY AIRPORT EXISTING SURFACE AND FEATURES GDA2020
Images: X IMG YCCY ATA.JPG

This document carries Airworks Consulting Pty Ltd copyright and is reproduced here for information only. The information shown must be verified for accuracy and completeness by necessary investigation and site inspection and measurement. Users of this information hereby agree and indemnify the company against any claim from the use of the information contained herein and associated discussions.

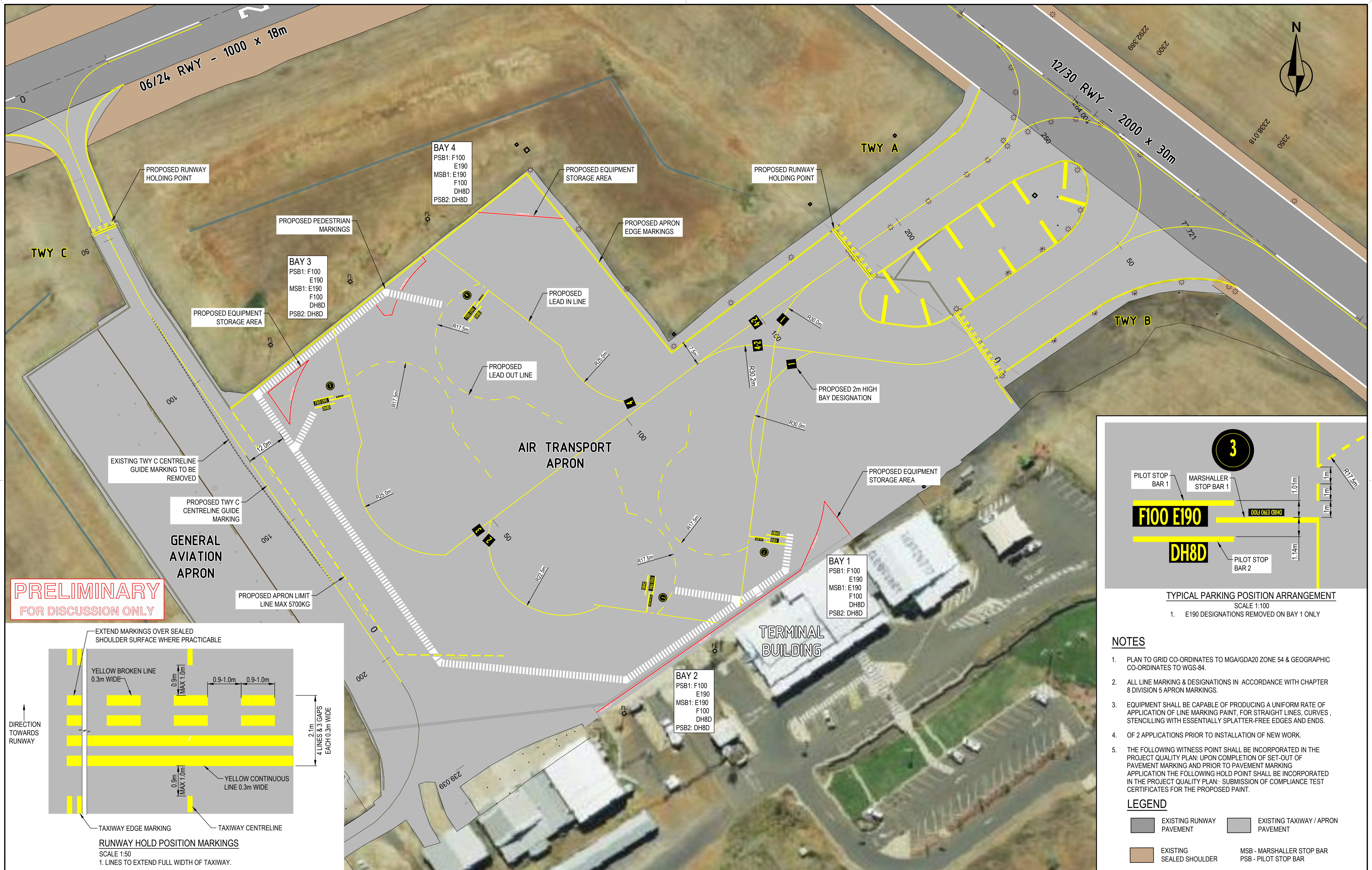
simon@airworksconsulting.com.au

CLIENT
CLONCURRY SHIRE COUNCIL

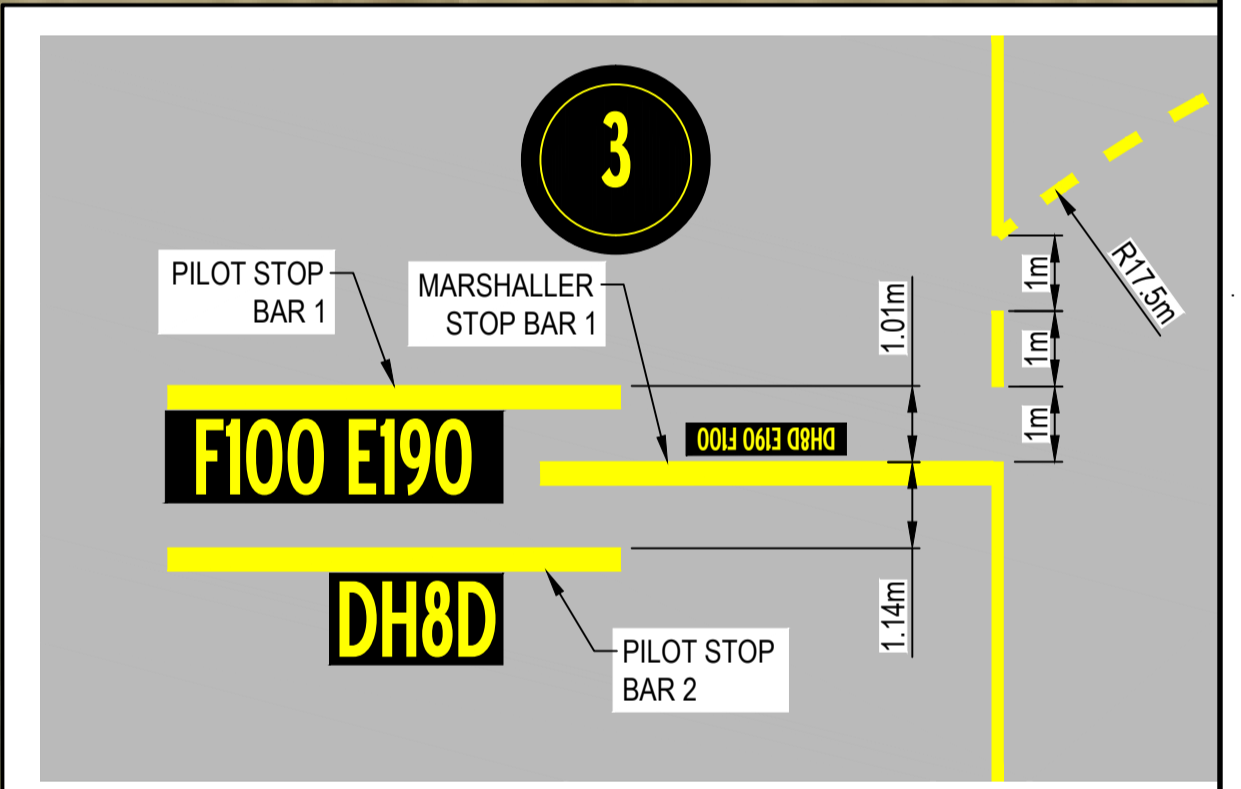
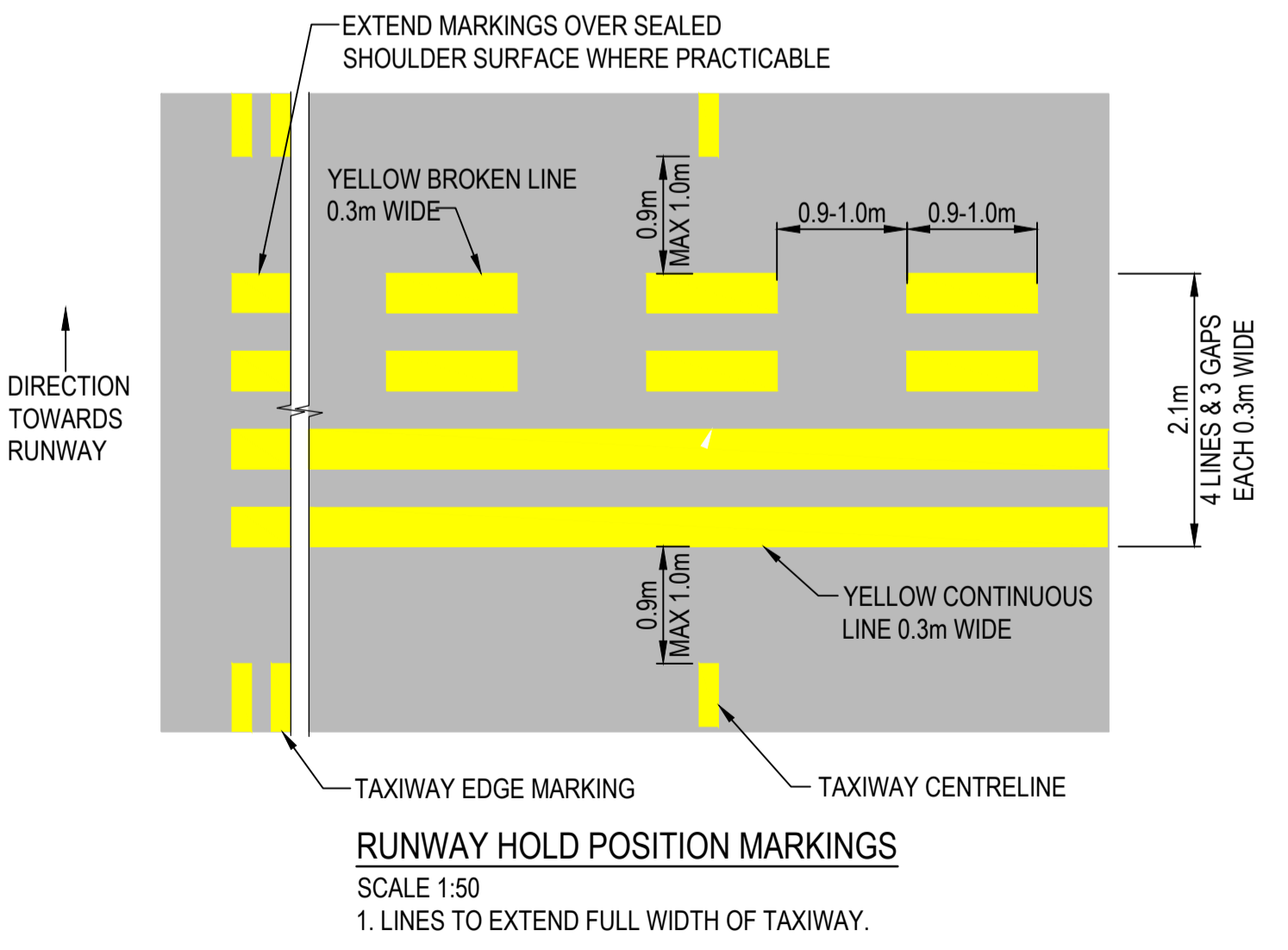
DRAWN: AIRWORKS 25.09.24
DESIGNED: AIRWORKS 25.09.24
APPROVED: G.WHITE
COMPANY: APES

CLONCURRY, QLD
CLONCURRY AIRPORT RESEAL PROJECT
AIR TRANSPORT & GENERAL AVIATION APRON
AIRCRAFT SWEEP PATHS & CLEARANCES

SCALE 1:500
DRAWING No. **YCCY24AV05**
REV **A**



PRELIMINARY
FOR DISCUSSION ONLY



TYPICAL PARKING POSITION ARRANGEMENT
SCALE 1:100
1. E190 DESIGNATIONS REMOVED ON BAY 1 ONLY

NOTES

1. PLAN TO GRID CO-ORDINATES TO MGA/GDA20 ZONE 54 & GEOGRAPHIC CO-ORDINATES TO WGS-84.
2. ALL LINE MARKING & DESIGNATIONS IN ACCORDANCE WITH CHAPTER 8 DIVISION 5 APRON MARKINGS.
3. EQUIPMENT SHALL BE CAPABLE OF PRODUCING A UNIFORM RATE OF APPLICATION OF LINE MARKING PAINT, FOR STRAIGHT LINES, CURVES, STENCILLING WITH ESSENTIALLY SPLATTER-FREE EDGES AND ENDS.
4. OF 2 APPLICATIONS PRIOR TO INSTALLATION OF NEW WORK.
5. THE FOLLOWING WITNESS POINT SHALL BE INCORPORATED IN THE PROJECT QUALITY PLAN: UPON COMPLETION OF SET-OUT OF PAVEMENT MARKING AND PRIOR TO PAVEMENT MARKING APPLICATION THE FOLLOWING HOLD POINT SHALL BE INCORPORATED IN THE PROJECT QUALITY PLAN: SUBMISSION OF COMPLIANCE TEST CERTIFICATES FOR THE PROPOSED PAINT.

LEGEND

- EXISTING RUNWAY PAVEMENT
- EXISTING TAXIWAY / APRON PAVEMENT
- EXISTING SEALED SHOULDER
- MSB - MARSHALLER STOP BAR
- PSB - PILOT STOP BAR

REV	DATE	AMENDMENTS
A	25.09.24	FOR INFORMATION

XREF LIST
Includes: ZSH_A1
Includes: X YCCY SURV GDA20-54
Includes: X YCCY CTRL
Includes: X YCCY HAT
Includes: X YCCY LMK DES01 GDA20-54
Includes: X YCCY IMG
Includes: CLONCURRY AIRPORT EXISTING SURFACE AND FEATURES GDA2020
Images: X IMG YCCY ATA.JPG

This document carries Airworks Consulting Pty Ltd copyright and is reproduced here for information only. The information shown must be verified for accuracy and completeness by necessary investigation and site inspection and measurement. Users of this information hereby agree and indemnify the company against any claim from the use of the information contained herein and associated discussions.

simon@airworksconsulting.com.au

CLIENT
CLONCURRY SHIRE COUNCIL

DRAWN: AIRWORKS 25.09.24
DESIGNED: AIRWORKS 25.09.24
APPROVED: G.WHITE
COMPANY: APES

CLONCURRY, QLD
CLONCURRY AIRPORT RESEAL PROJECT
AIR TRANSPORT & GENERAL AVIATION APRON
TITLE **LINE MARKING**

SCALE 5 0 5 10 15 20m
A1 SCALE 1:500

DRAWING No. **YCCY24AV06** REV **A**